



New ~ In Stock

# Graham Edwards PL3512 Plant Trailer

REF: 11037383 DEPOT: SKIPTON

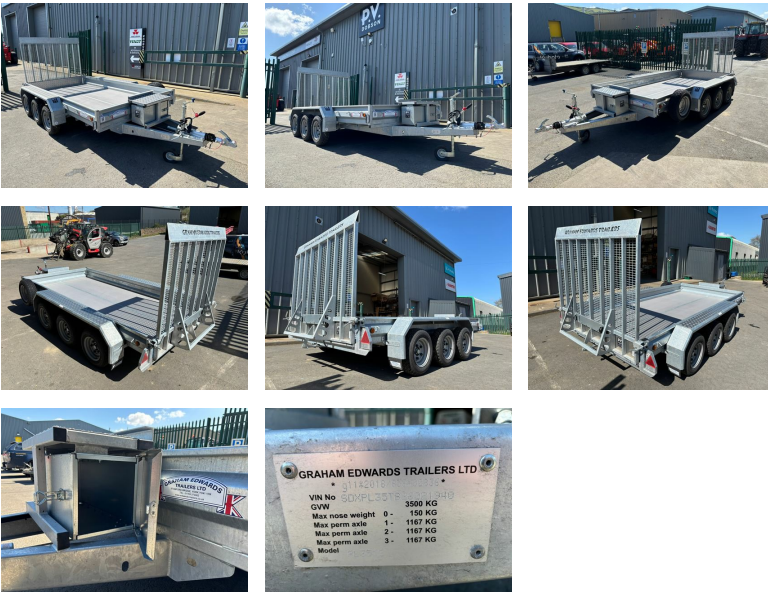
**POA**

BRAND: GRAHAM EDWARDS

YEAR	HOURS/MILES	WEIGHT
-	-	-

## Key features

- Tri Axle
- 3500kg Gross Weight
- 12ft x 5ft10
- Tool Box
- Spare Wheel
- Bucket Rest



GRAHAM EDWARDS TRAILERS LTD  
 VIN No 50KPL3012 3512  
 GVW 3500 KG  
 Max nose weight 0 - 150 KG  
 Max perm axle 1 - 1167 KG  
 Max perm axle 2 - 1167 KG  
 Max perm axle 3 - 1167 KG  
 Model

### LEVENS

015395 60833

Ivy House Works LA8 8PG

### WASHINGTON

0191 8160991

26 Brindley Road NE37 2SB

### SKIPTON

01756 701166

Unit 2, Snaygill Industrial Estate BD23 2QR

### CHORLEY

01772 426248

Unit 3M, Eaton Point PR7 7NG